

FBPM-488-025-10-10-00-A


Key Features:

High Reliability

High Stability

High Polarization Extinction Ratio

Applications:

Laser Pointer

Laser Display

Test and Measurement Source

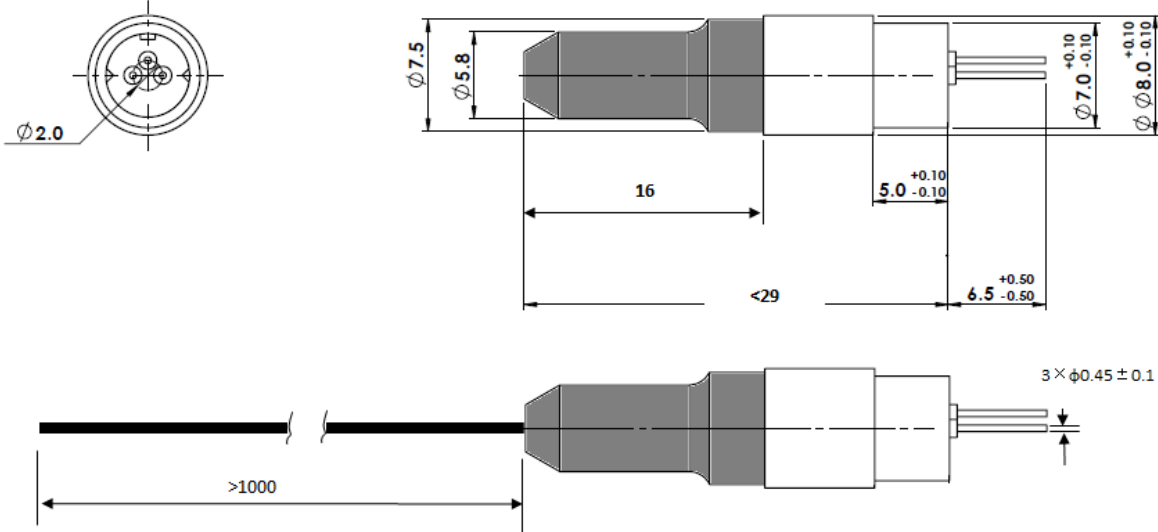
Survey Equipments

Model Number	FBPM-488-025-10-10-00-A				
Optical Parameters	Specs			Conditions	
	Min	Typ	Max		
Wavelength	486nm	488nm	490nm	@P _O =25mW & @25°C	
Output Power	22mW	25mW ^①	28mW	@25°C	
LD Working Current	-	90mA	120mA	@P _O =25mW & @25 °C	
Monitor Current	-	60μA	-	@P _O =25mW & @25 °C	
Polarization Extinction Ratio	15dB	-	-	@P _O =25mW & @25°C	
Power Stability @2hours	-	-	+/-2.5%	@P _O =25mW & @25°C	
LD Working Voltage	-	6.3V	8.0V	@P _O =25mW & @25 °C	
M-Square	-	-	1.1		
Laser Operating Mode	APC			-	
Working Temperature	-10 °C	25 °C	60 °C		
Fiber Parameters					
Fiber Type	3.3μm/125μm PM fiber				
Fiber Numerical Aperture	-	0.12	-	-	
Fiber Length	1m	-	-	-	
Fiber Jacket (diameter)	900um buffer			-	
Fiber Termination ^②	Without Connector				
Mechanical Parameters					
Laser Head Dimensions	Length	-	28.4mm	29mm	-
	Diameter	-	8mm	-	-
Reliability					
Storage Humidity	5%~85% R.H.			Non-condensing	
Storage Temperature	-20 to +60°C			Non-condensing	
Shock	1000g, 1ms, 5 times / axis, 3 axes tested				
Vibration	5g, 10-500Hz, 4min/cycles, 15cycles/axis, 3 axes tested				
Expected Lifetime (MTTF)	10000hrs@rated power &Room Temperature				

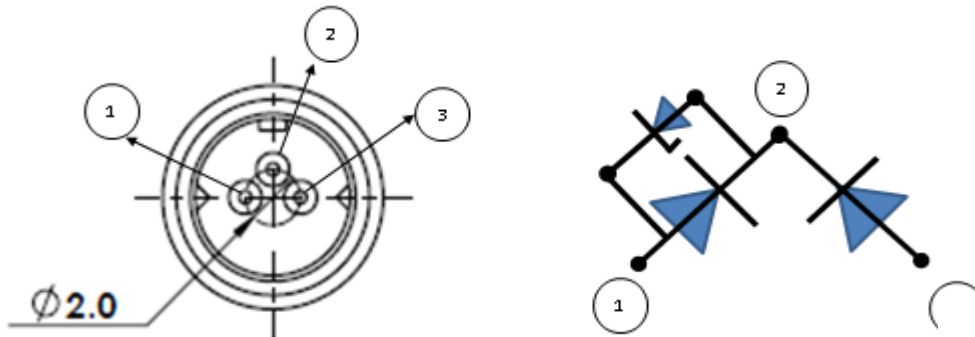
 Note: ^① Output power from the fiber termination;

^② FC/APC , FC/PC or SMA905 is optional;

Dimensions (Unit: mm)



Pin Configuration:



1: LD Anode; 2: COM (LD Cathode, PD Cathode) 3: LD Anode