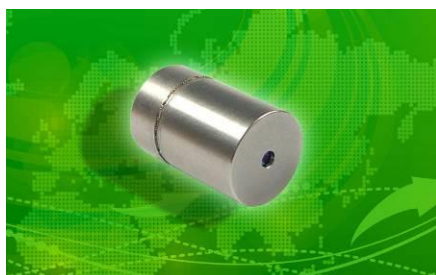


DPQL-1535-C-0050-004N-02


Key Features:

Eye-safe Laser Wavelength
 Internal Photodiode
 Low Power Consumption
 Mini Size
 High Reliability

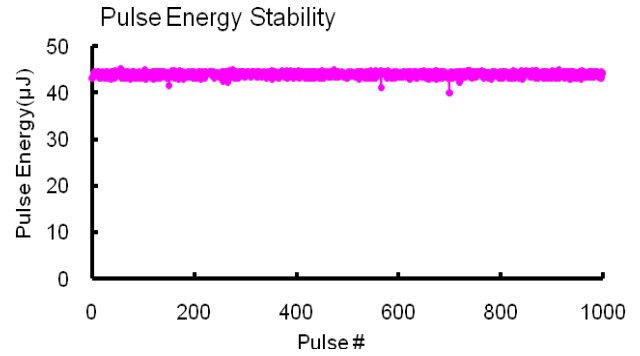
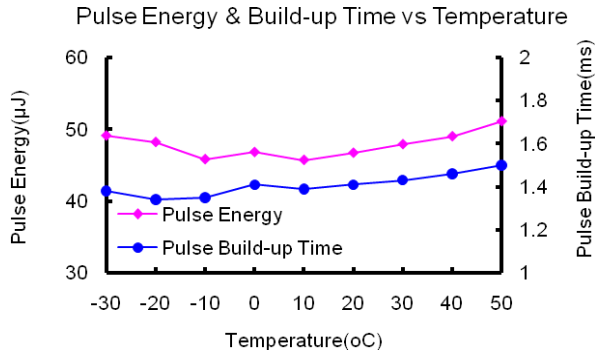
Applications:

Laser Telemeter
 Laser Surveying
 Remote Sensing

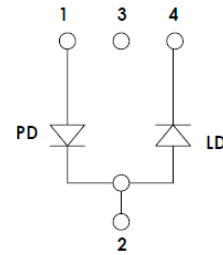
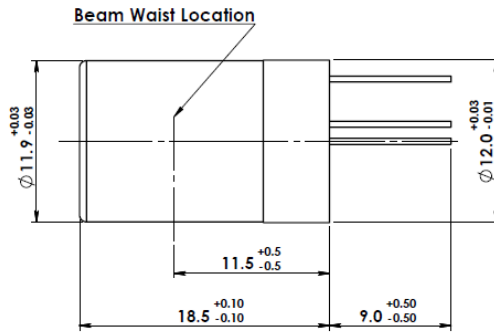
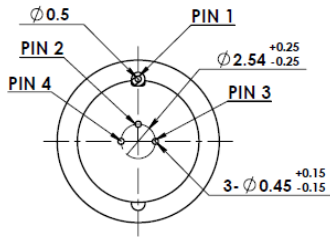
Model Number	DPQL-1535-C-0050-004N-02			
Optical Parameters	Specs			Conditions
	Min	Typ	Max	
Wavelength	-	1535nm	-	
Pulse Width	-	4ns	-	
Peak Power	-	8kW	-	
Pulse Repetition Frequency	-	100Hz	-	
Pulse Energy	-	40uJ	-	
Pulse Build-up Time	-	1ms	2ms	
Operating Temperature (Case)	-	-	-30~+50 °C	
Energy Stability	-	2%	5%	100pulses @ constant temp
Beam Diameter	-	0.25mm	-	At output window
Beam Divergence	-	12.5mrad	15mrad	Full angle, 1/e ²
M-Square	-	1.2	1.3	
Electrical Parameters				
LD Working Current	-	-	3A	Pump Pulse Peak Current
LD Working Voltage	-	2V	2.2V	
LD Pump Pulse Duty Cycle	-	-	40%	
Power Consumption		0.6W	1.2W	
Mechanical Parameters				
Packaging Dimension	Ø12.0mm×18.5mm			
Off center(Angle)	-	-	20mrad	
Off center(Position)	-	0.2mm	0.5mm	
Reliability				
Storage Humidity	-	5%~85% R.H. ^①	-	
Storage Temperature	-	-40 to +85 °C	-	
Shock	1500g, 0.5ms, 6 shocks, 3 axes, 2 shocks/axis			
Vibration	20~2000Hz, 0.02g ² /Hz, 3 axes, 1hr/axis			
Expected Lifetime (MTTF)	5000hrs	-	-	@Rated Output & Room Temp.

Note: ① Non-condensing

Typical Output Performance



Dimensions and Pin Configuration (Unit: mm)



PIN Configuration: 1.PD+ 2.COM* 3.NA 4.LD-
 Note: 1.COM* : LD+ & PD- (conduction with case)
 2.PD:Laser Pulse detect